

Harvesting Green Wood

OR

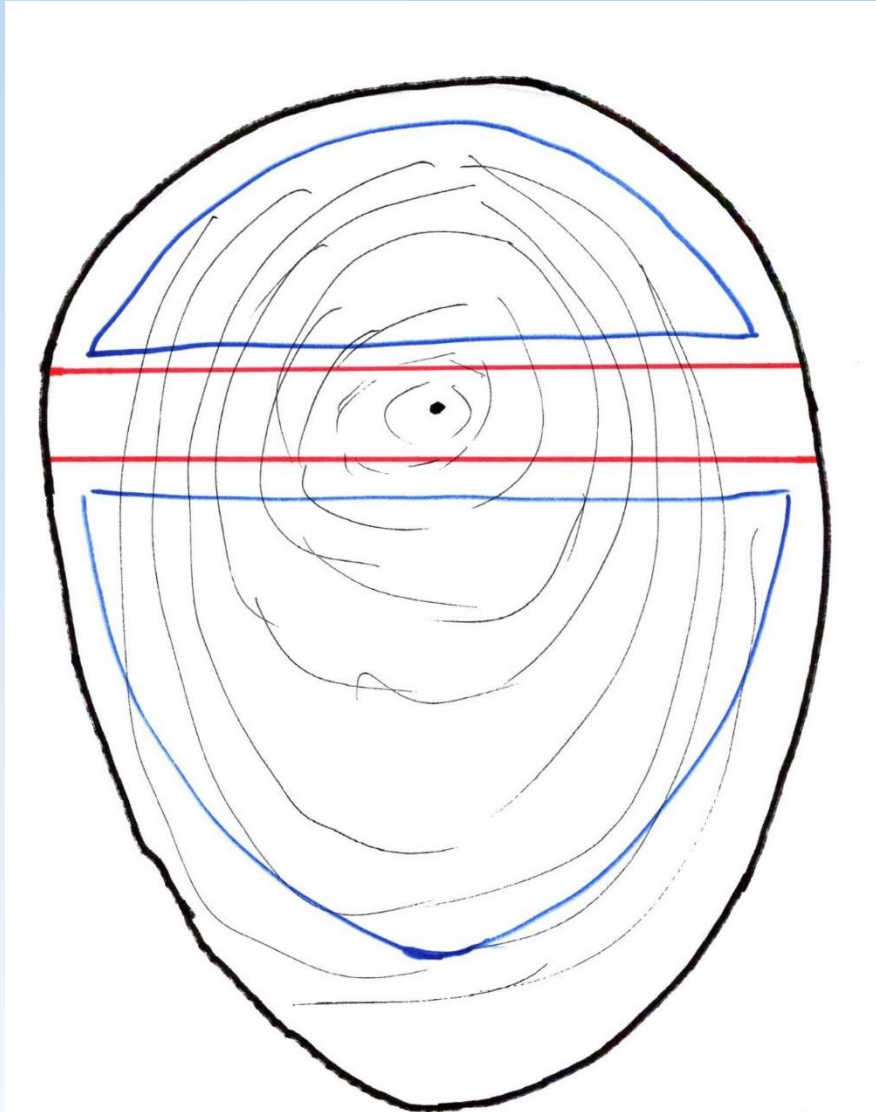
THE CHAINSAW MASSACRE

BILL LOITZ

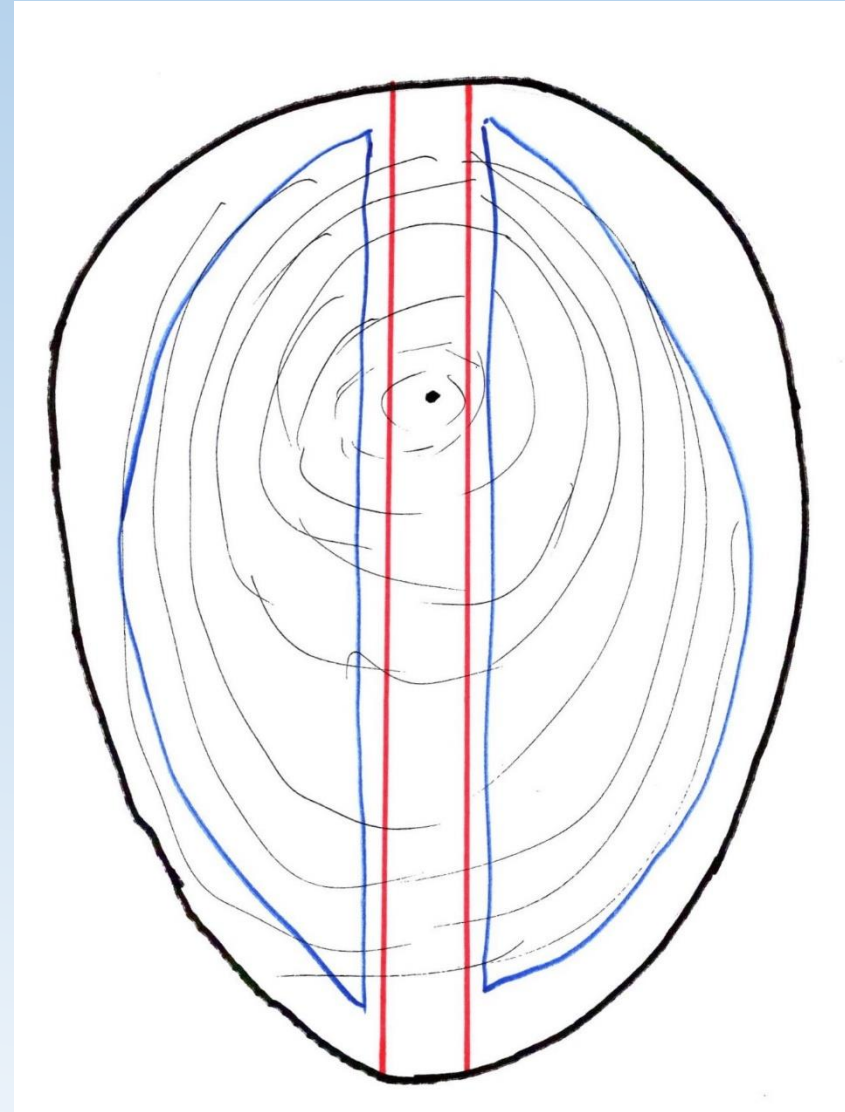
LOGS ARE RARELY ROUND
AND THE PITH IS NEVER IN
THE RIGHT PLACE.

When the pith is very far off-center, you need to cut the log so that the pith is in the center of the blanks.

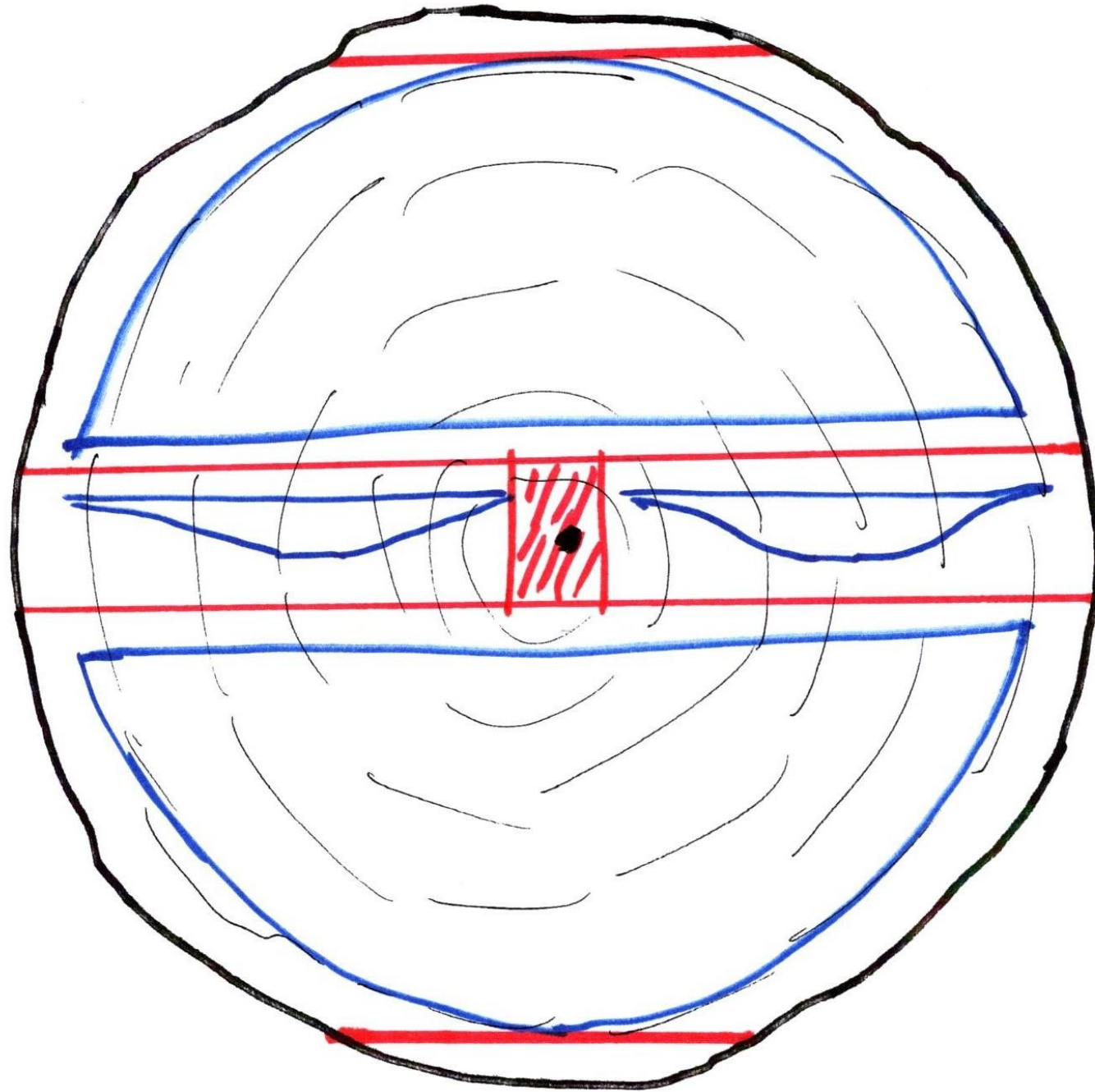
Correct



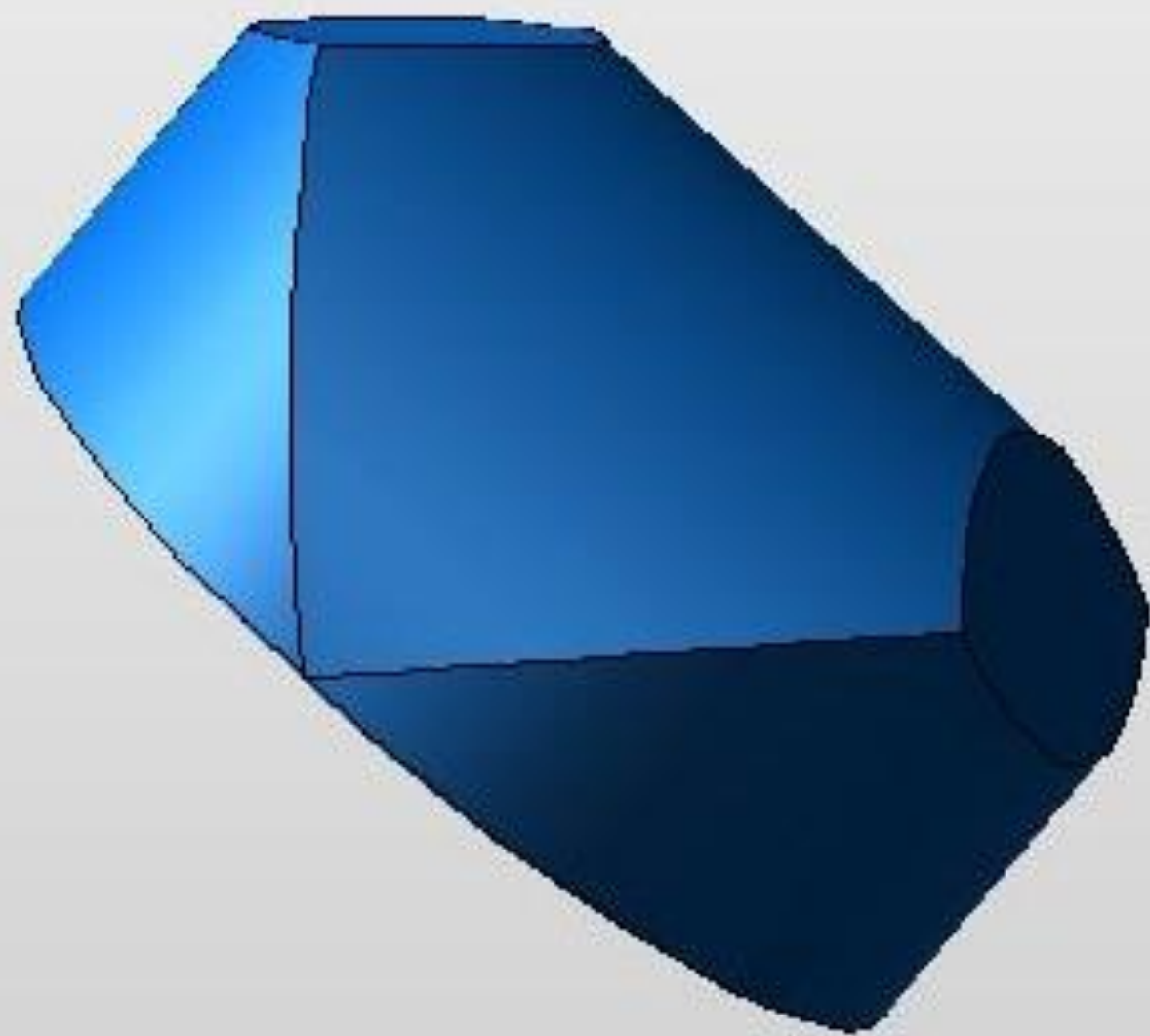
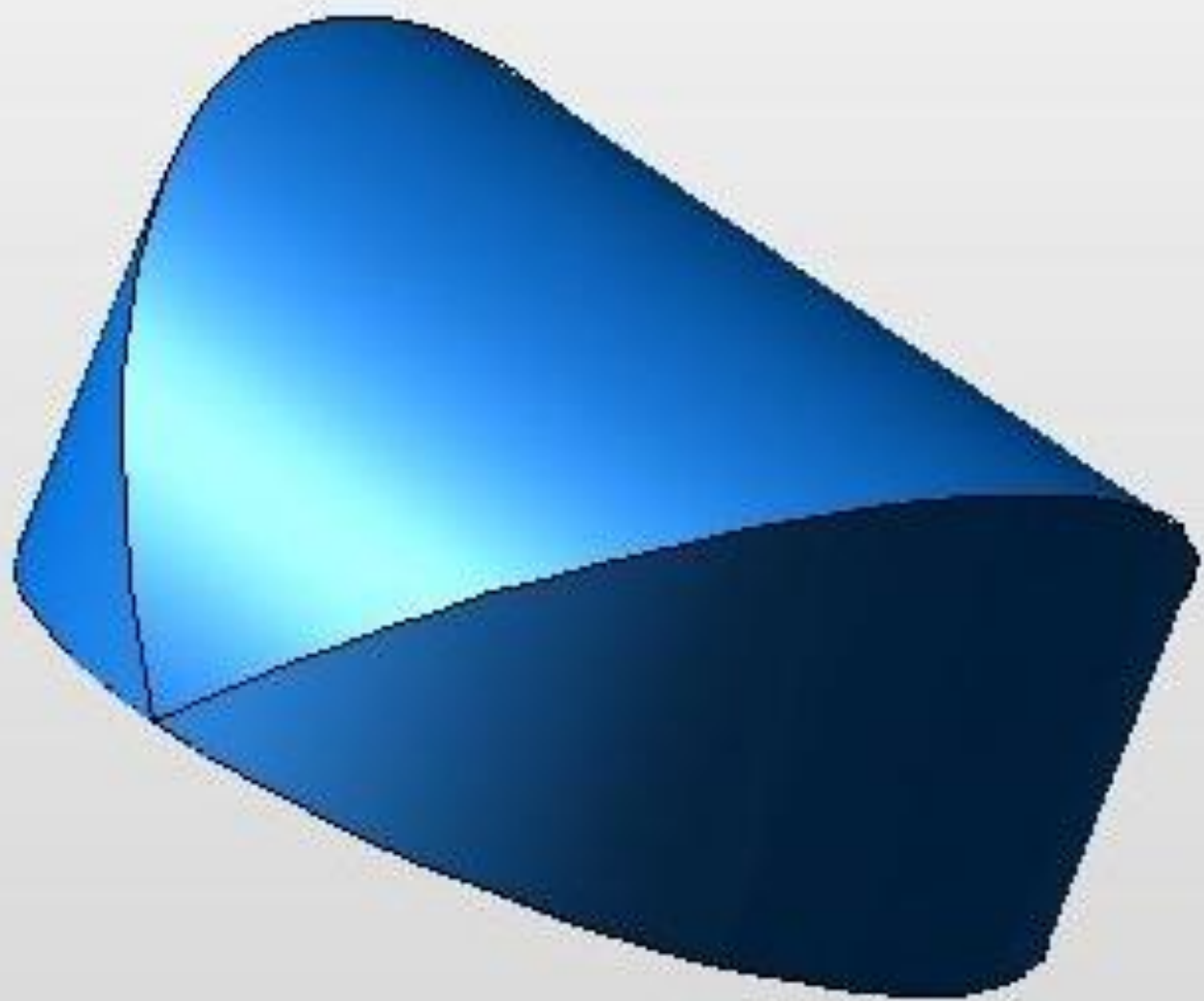
Incorrect



When cutting the pith out of the log, it is possible to leave enough material in the middle to allow for two platter blanks. You will also want to make a cut to flatten the base of the bowl blanks.



Once you have the blanks cut round, it helps to cut off the two “ears” on each end. This will save a lot of grief when turning the bottom of the bowl blank. The image on the right has the “ears’ cut off.

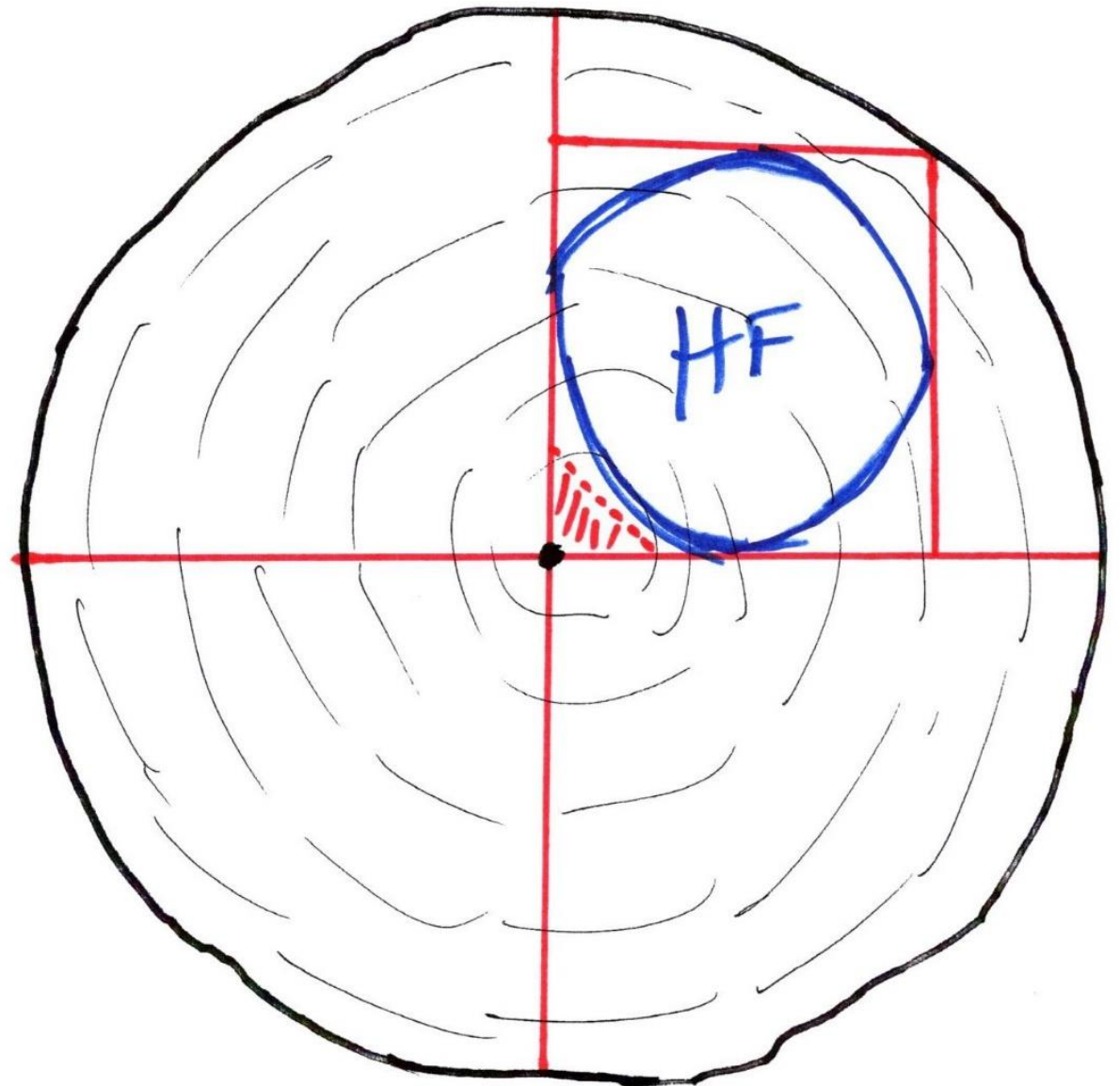
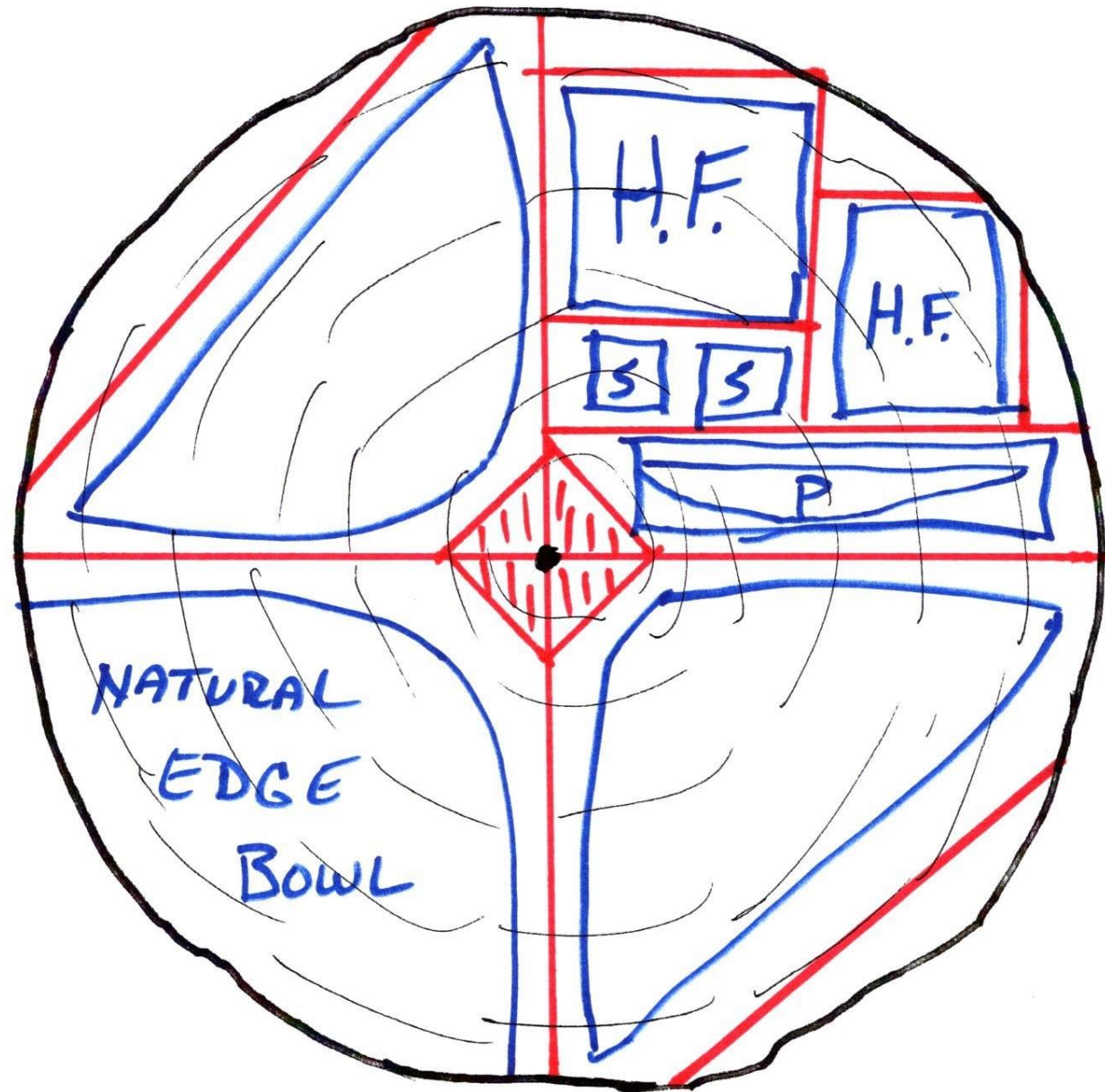


Larger logs offer many options for blanks.

HF = Hollow Form

S = Spindle Blank

P = Platter Blank



A simple rest made out of plywood and 4x4 construction material is a good way to stabilize your log while cutting. If the log is too large to be lifted, you can put the rest on the ground and roll the log onto it.



Once you determine where you want to make your cut on one end of the log, draw a vertical line and cut a nick in the edge with the chainsaw.



Drawing a vertical line on the opposite end and cutting a nick there will allow you to align the saw with the nicks and make a vertical cut down both lines.



If you stop short of completing your cuts, the log will remain stable. Once both cuts are almost finished you can go back and finish them. This reduces the amount of work on an unstable blank.



Make various diameter circle templates with center holes for marking out your circles.



Use the chainsaw to make a number of cuts close to the circle to produce a near-round blank.



Crotch pieces require extra effort in order to get the best effect of the feathering.



When cutting a crotch blank you will want to split the log right on the three piths.



Bowls and platters made from crotch blanks need to be turned with rim on the bark side of the blank. Otherwise you will be turning out all the figure.



*I hope this helps you next time
you find a piece of gold along
the road.*