



SLIGHTLY

SKEWED

Journal of the Glendale Woodturners Guild

Volume 18, Number 3 – March 2009

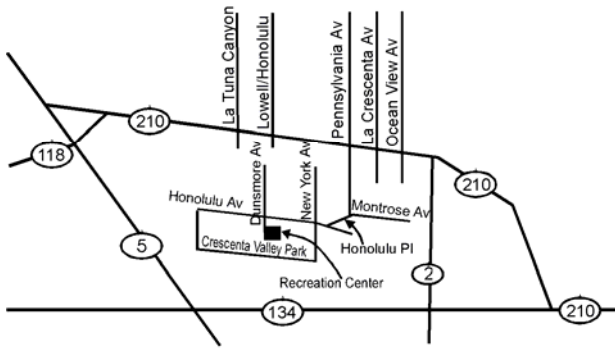
NEXT MEETING

March 8, 2009

Sunday March 8, 2009
2:00 p.m. Sharp

HOW TO FIND US

Crescenta Valley Regional Park
Recreation Center
Dunsmore & Honolulu, La Crescenta



Thomas Guide 534-E-1

SUNDAY MEETINGS

Meetings consist of announcements, a feature presentation, a Challenge, Show & Tell and a wood raffle

March 8, 2009

Presentation: *Dust Collection for Dummy's-*
Dave Hergesheimer

Challenge: *Surface Decoration*

President's Message



First of all I want to send a big congratulation out to **Bill Haskell** from all of us at the GWG; **Bill** has become the new AAW President. We had a packed house again for our February meeting, which is always nice to see. A long time member **Ralph Otte**, who had moved to

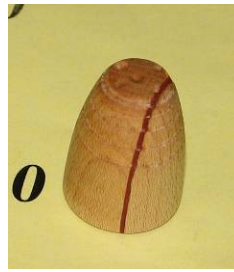
Colorado, was in town. So of course he attended the meeting and brought in some of his turnings for show and tell. Also in attendance was **Alberto Orneles**. We had not seen **Alberto** since he moved out to San Dimas a year and a half ago. He says he misses us and will be attending regularly again. Coming to the meetings regularly keeps you motivated and inspired and helps you turn better and better pieces. We also welcomed four new members. We are having **James Santhon** for our first demo of the year. It's a half day demo on Saturday March 14th at 9 am to 1pm so the price is only \$15.00. Donuts and coffee will be served. If you would like to attend then sign up at the March meeting or call or e-mail me and I will put you on the list. Then we have **Frank Kopecky 's** half day pen turning demo set up for Saturday April 18th 9am to 1pm. **Pete Carta** brought in some beautiful **Cindy Drozda** style finials. He said he would be happy to give us a demo on making a finial box this year. I will schedule it soon, thanks **Pete**. The challenge this month was thimbles; we had a very light showing. I realize it was a little tougher than you think and a

lot of members don't do small turnings but that is why it is called a challenge. Next month there is no excuse, the challenge is surface decoration. It can be any turned pieces with the surface decorated. Such as carving, piercing, painting and, since **Bill Loitz** gave us such a fantastic presentation on it, gilding and patination. Bill spoke in depth on the subject and he brought several examples of his work and had a great handout. Thanks **Bill. Efoim** our ebony wood dealer attended the meeting and several of us picked some nice turning squares. I am sure you will see several ebony turnings at show and tell in the next few months. **Effiom** says that next year when he comes he will have Zebrawood, Bubinga and possibly Wenge. Now I would like to send out a big thank you to all of the regular volunteers. They are the members that keep the club running smoothly. **Frank Guarino** VP, **Al Sobel**, Secretary, **Amy Earhart**, Newsletter Editor, **Bob Devoe** Treasurer etc, **Deb Segal** Librarian, **Bill Nobel** and **Craig Sobel** Web Guys, **Cathy Pearman** and **Ken Pazera**, snacks and coffee making, **Dave Hergesheimer**, raffle guy, **Floyd Pederson**, wood guy, **Bob Ulrich**, newsletter mailing guy. **Bob Ricard** and **John Doyle**, drink committee. Everyone should make it a point at next months meeting to say thanks to these members so they know how much their extra effort is appreciated. Just a reminder that April and May meetings will be on the first Sunday of the month because of Easter and Mother's Day. Don't forget to bring empty containers for the Anchor Seal.

See you next month. Happy turning.
Queen Carey

CHALLENGE

There was a decent turnout for the challenge this month at least all of the categories were represented. So in the Novice category there were three entries. The first was a thimble from a Valencia Orange tree by new member **Jim Johnson**.



The next entry was a thimble turned from Maple with a fish paper insert by **PJ Hays**. It had an oil finish.

Bob Clark brought in a pewter spun thimble and pewter "shot glass".



The winner in the category was **Bernie Huberman** with his sewing ensemble turned from various scrap woods.



In the Intermediate Category the winner was **Bob Ricard** who really started this challenge by purchasing the thimble drill bit from Craft Supply in Provo last year.

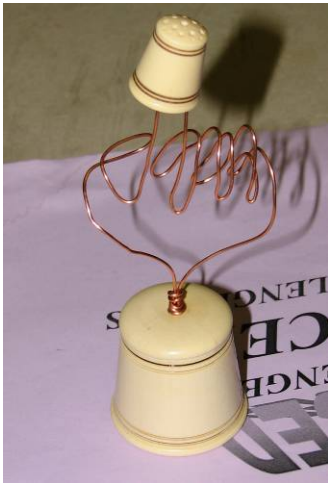


In the Advanced category **Pete Carta** brought in a thimble turned from Carob and finished with lacquer and wax. He also used the infamous **Bob Devoe** knurling tool for some texture.



Amy Earhart brought in a thimble turned from stabilized Box Elder Burl that was finished with oil.

The winner in the category was **Queen Carey Caires** with her thimble on a stand. It was turned from Holly and the stand included copper wire.



"Step Sisters". They are 6 ½ "x 10 ½" in diameter and are made from Walnut, Cherry and Ebony with 229 pieces each. The second bowl is 3" x 8" and consists of 61 pieces of Gabon Ebony.



Jim O'Connor brought in another one of his turned cowboy hats. This one was turned from a piece of Liquid Amber with a lacquer finish.



SHOW AND TELL

There were a lots of turnings brought in this month. We started off with **Owen Robbins** and his bowls turned from Live Oak and Cherry with a fossil insert. Nice efforts,



Robert Manning brought in three more of his terrific segmented bowls. He calls the first "Ebony

Al Miller brought in a beautiful Rose Myrtle Burl three sided hollow vessel with a Tung Oil finish.



Ralph Otte was in town for a visit and brought in four things he likes to give as gifts. A pig tail flipper, a lidded box, a non spill tumbler and a duck call that he briefly demonstrated for us.





Jack Stumpf brought in a Silver Maple bowl turned on his new lathe. He was so excited about sharing it with us he hadn't put a finish on it.



Dan Hogan brought in another beautiful Alabaster bowl. This one was about 7" x 9" with a carved insertion. Amazing!



Pete Carta brought in two lidded boxes. The first was turned from Holly and the second was turned from Cherry and Bubinga. The finials were in the Cindy Drozda style.



Contacts

GWG mailing address:

Glendale Woodturners Guild
11001 Canby Avenue
Porter Ranch, Ca. 91326

GWG web site:

<http://www.woodturners.org>

President: Carey Caires

(h) (818) 760-2210

president@woodturners.org

Vice President: Frank Guarino

(h) (818) 352-3925

vp@woodturners.org

Treasure: Bob DeVoe

(h) (818) 507-9331

Secretary: Al Sobel

secretary@woodturners.org

(h) (818) 360-5437

Editor Newsletter: Amy Earhart

(h) (562) 463-7877

editor@woodturners.org

Librarian: Deb Sigel

(h) (518) 225-4677

librarian@woodturners.org

2009 CALENDAR

Meetings:

April 5, 2009 **First Sunday**

May 3, 2009 **First Sunday**

June 14, 2009

July 12, 2009

August 9, 2009

September 13, 2009

October 11, 2009

November 8, 2009

December 13, 2009

Demonstrations:

March 14, '09- James Santhorn

April 18, '09- Frank Kopecky

PRESENTATION



Bill Loitz gave us a great demonstration of gilding and patination. He brought in sample boards that he had done at a class he took recently with David Marks in Northern California. He gave us a very comprehensive

four page hand-out that will be on the web-site. He brought in several turnings that were gilded and patinated. The process for gilding is pretty straight forward. Start off with a smooth surface and then seal it with your sealer of choice. Paint the surface and allow it to dry. Apply the gilding size, quick dry oil-based, and then wait for it to tack-up. Apply any masks where you want the gilding not to stick. Then apply the gilding and wait 24 hours for it to dry. Then remove the excess gilding, called skewings, At this point you can either stop and seal it up or go on to the patination process. This is where it seems to get a little tricky. Depending on your gilding metal you can use a different chemical mixed with water and then applied to the surface. How long you leave it in contact and the strength of the solution will give different effects. Bill had samples that had netting over them during the chemical application and because these “masked off” areas protected the gilding when the netting was removed a pattern was left behind. You remove the chemicals by simply blotting with a paper towel. Then apply your sealer coat and you have another masterpiece! I hope everyone was paying attention because these lessons learned can be used for next months challenge. Good luck, I may even give it a try.



Finishing Thoughts

Call or email me, **Amy Earhart** (the Editor) with your t-shirt orders. They are just \$15 for small through extra large and \$17 for XXL and larger. At the present time I have orders for 39 shirts and I have placed an order. This is still only about 28% of our membership so come on folks and contact me with you order! **Queen Carey** still wants that group photo for the newsletter!

Welcome new members: **Jim Johnson, Ed Fry, Bob Freed** and **Todd Aston**.

BEGINNERS CORNER

In the December issue I started talking to the beginners in our Guild and I started with some basic tools. That month we had a presentation by our vice president about safety glasses and shields and dust masks and respirators. So here are the basic safety items you should have and what you can expect to pay. A simple face shield will cost about \$20-\$24 if bought from the most popular woodworking or woodturning retailers. A pair of safety glasses will run \$9- \$17 a pair. A dust mask will be \$1.50-\$2.00 each. Remember not to have loose long sleeves around the lathe A good short sleeve cotton t-shirt is all you really need to start with but turners smocks are also available from the AAW and Craft Supply for \$50-\$54 each. If you turn an “exotic” wood like Cocobolo, that’s in the Rosewood family, you may want to wear long sleeves and maybe latex gloves. Some people are allergic or develop allergies to these woods. The gloves can also be used to apply a CA finish or any other finish, stain, dye or surface embellishment. You can get these at a drug store or big box retailer for \$5-\$6 for a box of 50. Light is also very important so of course I would encourage you to have your lathe outside in the sunlight, this makes clean-up easy too. But if can’t be outside then a magnetic work light will cost \$20-\$30. And finally because we generally stand while turning you should consider getting a good Anti-Fatigue Floor Mat, these will run \$20-\$30. Stay safe and have fun!